

Universal 3 Models 180, 220

SEAL KIT DESCRIPTION AND PART NUMBERS

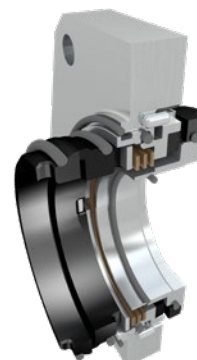
SEAL KIT DESCRIPTION	KIT PART NUMBER	STANDARD U3 SEAL ITEM NUMBERS									
		153	154	156	157	162	163/166	164/171	165	36	26A
		SEAL KIT COMPONENTS									
		O-Ring, Flush Rotary Seal	Flush-Side Rotary Seal	Flush-Side Stationary Seal	O-Ring, Flush Stationary Seal	O-Ring, Seal Housing	O-Ring, Product Side Seal	Product-Side Stationary Seal	Product-Side Rotary Seal	Cover Gasket	O-Ring, Rotor Nut
		Qty. 1/kit	Qty. 1/kit	Qty. 1/kit	Qty. 1/kit	Qty. 1/kit	Qty. 1/kit	Qty. 2/kit	Qty. 1/kit	Qty. 1/kit	Qty. 1/kit
SEAL KIT, 220U3, SM, C/SC, FKM	139431+	---	---	---	---	---	V70248	138384+	138364+	137431+	V70228
SEAL KIT, 220U3, SM, C/SC, EPDM	139432+	---	---	---	---	---	E70248	138384+	138364+	137433+	E70228
SEAL KIT, 220U3, SM, C/SC, FFKM	139433+	---	---	---	---	---	K70248	138384+	138364+	137432+	K70228
SEAL KIT, 220U3, SM, SC/SC, FKM	139434+	---	---	---	---	---	V70248	138367+	138364+	137431+	V70228
SEAL KIT, 220U3, SM, SC/SC, EPDM	139435+	---	---	---	---	---	E70248	138367+	138364+	137433+	E70228
SEAL KIT, 220U3, SM, SC/SC, FFKM	139436+	---	---	---	---	---	K70248	138367+	138364+	137432+	K70228
SEAL KIT, 220U3, SM, SC/TC, FKM	139437+	---	---	---	---	---	V70248	138367+	138396+	137431+	V70228
SEAL KIT, 220U3, SM, SC/TC, EPDM	139438+	---	---	---	---	---	E70248	138367+	138396+	137433+	E70228
SEAL KIT, 220U3, SM, SC/TC, FFKM	139439+	---	---	---	---	---	K70248	138367+	138396+	137432+	K70228
SEAL KIT, 220U3, SM, TC/TC, FKM	139440+	---	---	---	---	---	V70248	138399+	138396+	137431+	V70228
SEAL KIT, 220U3, SM, TC/TC, EPDM	139441+	---	---	---	---	---	E70248	138399+	138396+	137433+	E70228
SEAL KIT, 220U3, SM, TC/TC, FFKM	139442+	---	---	---	---	---	K70248	138399+	138396+	137432+	K70228
SEAL KIT, 220U3, DM, C/SC-C/SC, FKM	139443+	V70245	138373+	139789+	V70248	L25071002	V70248	138387+	138364+	137431+	V70228
SEAL KIT, 220U3, DM, C/SC-C/SC, EPDM	139444+	E70245	138373+	139789+	E70248	L25071004	E70248	138387+	138364+	137433+	E70228
SEAL KIT, 220U3, DM, C/SC-C/SC, FFKM/FFKM	139445+	V70245	138373+	139789+	V70248	L25071002	K70248	138387+	138364+	137432+	K70228
SEAL KIT, 220U3, DM, C/SC-C/SC, FFKM/EPDM	139446+	E70245	138373+	139789+	E70248	L25071004	K70248	138387+	138364+	137432+	K70228
SEAL KIT, 220U3, DM, SC/SC-C/SC, FKM	139447+	V70245	138373+	139789+	V70248	L25071002	V70248	138370+	138364+	137431+	V70228
SEAL KIT, 220U3, DM, SC/SC-C/SC, EPDM	139448+	E70245	138373+	139789+	E70248	L25071004	E70248	138370+	138364+	137433+	E70228
SEAL KIT, 220U3, DM, SC/SC-C/SC, FFKM/FFKM	139449+	V70245	138373+	139789+	V70248	L25071002	K70248	138370+	138364+	137432+	K70228
SEAL KIT, 220U3, DM, SC/SC-C/SC, FFKM/EPDM	139450+	E70245	138373+	139789+	E70248	L25071004	K70248	138370+	138364+	137432+	K70228
SEAL KIT, 220U3, DM, SC/TC-C/SC, FKM	139451+	V70245	138373+	139789+	V70248	L25071002	V70248	138370+	138396+	137431+	V70228
SEAL KIT, 220U3, DM, SC/TC-C/SC, EPDM	139452+	E70245	138373+	139789+	E70248	L25071004	E70248	138370+	138396+	137433+	E70228
SEAL KIT, 220U3, DM, SC/SC-C/SC, FKM	139453+	V70245	138373+	139789+	V70248	L25071002	K70248	138370+	138396+	137432+	K70228
SEAL KIT, 220U3, DM, SC/TC-C/SC, FFKM/EPDM	139454+	E70245	138373+	139789+	E70248	L25071004	K70248	138370+	138396+	137432+	K70228
SEAL KIT, 220U3, DM, TC/TC-C/SC, FKM	139455+	V70245	138373+	139789+	V70248	L25071002	V70248	138402+	138396+	137431+	V70228
SEAL KIT, 220U3, DM, TC/TC-C/SC, EPDM	139456+	E70245	138373+	139789+	E70248	L25071004	E70248	138402+	138396+	137433+	E70228
SEAL KIT, 220U3, DM, TC/TC-C/SC, FFKM/FFKM	139457+	V70245	138373+	139789+	V70248	L25071002	K70248	138402+	138396+	137432+	K70228
SEAL KIT, 220U3, DM, TC/TC-C/SC, FFKM/EPDM	139458+	E70245	138373+	139789+	E70248	L25071004	K70248	138402+	138396+	137432+	K70228

ABBREVIATION	DESCRIPTION
SM	Single Mechanical
DM	Double Mechanical
C	Carbon
FKM	Viton
CE	Ceramic
CO	Chrome Oxide
NF	Narrow Face
FFKM	Kalrez
SC	Silicon Carbide
TC	Tungsten Carbide
ZI	Zirconia
EPDM	Synthetic Rubber

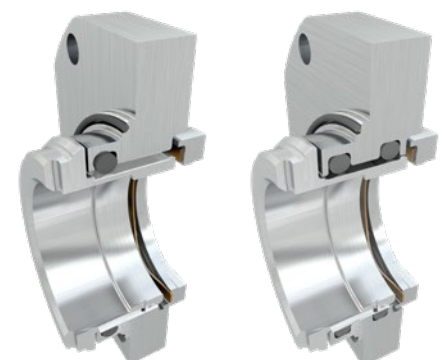
Single Mechanical Seal



Double Mechanical Seal



Single and Double O-ring Seal



Based in Charlotte, North Carolina, SPX FLOW, Inc. (NYSE: FLOW) is a multi-industry manufacturing leader. For more information, please visit www.spxflow.com

SPX FLOW 611 Sugar Creek Road Delavan, WI 53115

P: (262) 728-1900 or (800) 252-5200 E: wcb@spxflow.com

SPX FLOW, Inc. reserves the right to incorporate our latest design and material changes without notice or obligation.

Design features, materials of construction and dimensional data, as described in this bulletin, are provided for your information only and should not be relied upon unless confirmed in writing. Please contact your local sales representative for product availability in your region. For more information visit www.spxflow.com.

The green "S" and "X" are trademarks of SPX FLOW, Inc.

ISSUED 10/2020 SKP-004

COPYRIGHT © 2020 SPX FLOW, Inc.